

Super Hi-res Camera

MEL Secure Systems' periscope system is a unprecedented long-range, controllable standoff surveillance system.

Designed to operate in all weather conditions, Super Hi-res is easy to deploy. With its integrated tripod legs, the tactical model can be set-up in a matter of seconds. Once deployed, it provides 360 degree continuous coverage and can read 4-inch-high letters at a distance of 1 km.



Using the latest in EMCCD technology, the day/night, low-light model provides excellent coverage in near no light applications. When your position cannot be compromised with active illumination, the long range thermal Super Hi-res is the model of choice. In area wide applications, a combination of Super Hi-res models ensures that you have a high quality video picture when you need it.

Super Hi-res's innovative motor drive system provides precise positioning control, allowing the operator to follow subjects even at the most extreme zoom settings. The slow speed precision does not come at the sacrifice of high

speed panning; with a maximum speed of 35 degrees per second, the Super Hi-res can move quickly to video verify any automated alarms as required.

Using a number of covert concealment enhancements, the Super Hi-res system can easily blend into its surroundings, making it the perfect long-range surveillance tool. With its extreme standoff distance, agents can feel confident that the deployed camera will not be detected when placed in well protected neighborhoods. The Super Hi-res can provide effective surveillance at up to half a mile from the target location.

Contact your MEL Secure Systems sales representative or visit our web site to learn more about how MEL cam can meet you next surveillance needs.

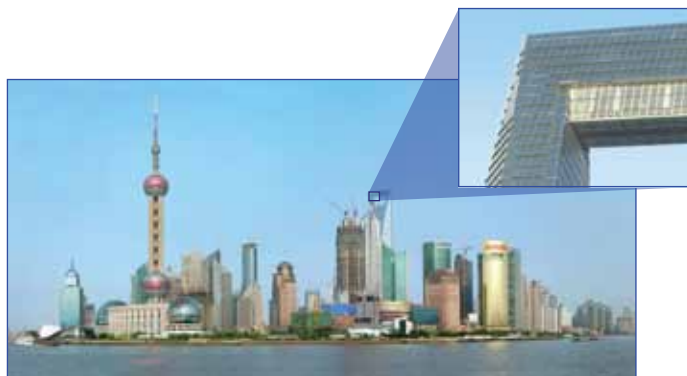
Standard Features

- Continuous rotation pan, with $\pm 40^\circ$ tilt
- IP MPEG4, MJPEG, H.264
- 0.03° repeatability for use with smart video systems
- Available in day/night low light color or with thermal imager for no light applications
- Day/night 60x/1500 mm lens
- Optional thermal 100-500 mm continuous zoom imager
- RF modules, Analog & Digital for all models and RF Bands

Applications

- Overt tactical surveillance: SWAT, Special Forces, Sniper Spotter
- Overt long term surveillance: Harbors, airports, bridges, power plants
- Covert surveillance: Urban and rural concealments available

Low power operation for solar deployments



Super Hi-res Camera

Pick-up Device

768 H x 494 V Pixels, interline transfer CCD

Video Output

1.0V (p-p) NTSC composite 75 Ohms / BNC connector

Horizontal Resolution 480-line at color imaging
570-line at b/w mode

Minimum Illumination

0.14 lx (0.014 fc) at F1.4 (at color mode)

0.01 lx (0.001 fc) at F1.4 (at b/w)

S/N Ratio 50 dB at AGC OFF

Motion Detector On/off selectable

Electronic Light Control

Equivalent ton continuous variable shutter speed between 1/60s to 1/10,000s

Electronic Sensitivity

Off, auto (x2, x4, x6, x10, x16, x32)

Fixed (x2, x4, x6, x10, x16, x32, x64)

Gain Control

AGC ON/OFF selectable (setup menu)

Electronic Shutter Speed

1/60 (Off), 1/100, 1/250, 1/500, 1/1,000, 1/2,000, 1/4,000, 1/10,000 selectable

Focal Length (60x)

12.5 mm - 750 mm

25 mm - 1500 mm (with 2x extender)

Zoom Ratio 60x

Maximum Relative Aperture 1:38

Horizontal 28° 43' wide, 0° 29' tele
14° 35' wide, 0° 15' tele (x2)

